

1) M b: the repeat of the second element is suggested by the 'Ali Ufki version.

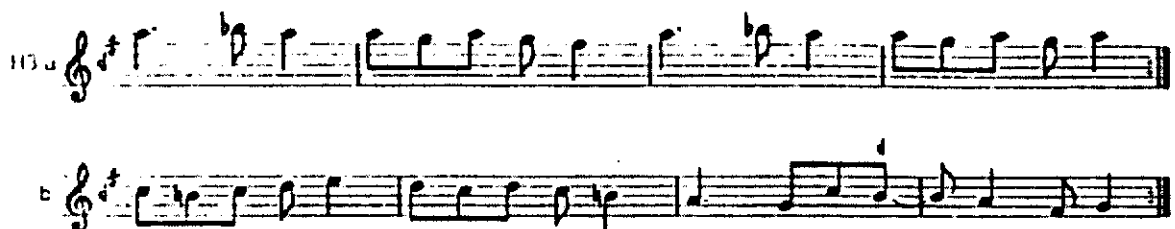
2) 'Ali Ufki 128r/243. 1 = J .

H1 2: 1 c.

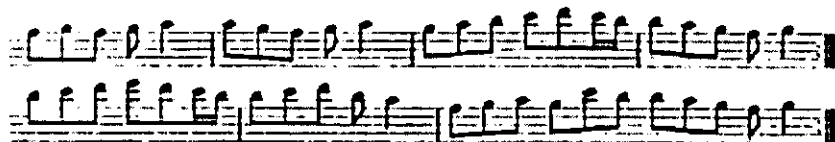
M a 1: 6 g, 5: 1 F#, 4 G, 6: 2 G. M a is considered part of H1, the *mûlâzime* starting therefore with M b.

M b 2-4:

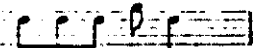

This is followed by: 5: 6 g, 9: 1 F#, 4 G.



2) H12 2: 2-3 *a g*, 4 *a*, 5-6 *b(d)*. 1-4 are written as 2 cycles to be repeated. Corresponding to 5-8 is:



H13 a 1: 4 *d*, 3: 1-2 *f# g*, 4: 5-6 *f#*.

H13 b 1:  2 is followed by: 

3: 1 *G*, 4: 3 *G*.

3) Sanal 181-2. 1 = ♩ . Suggested tempo $\text{♩} = 288$.

b \sharp and *B \sharp* are rendered throughout by *b \sharp* and *B \sharp* respectively.